



THE MESSENGER

Our Saviour Lutheran Church

November 2013

*Enter his gates with thanksgiving. . .
Give thanks to him, bless his name.
Psalm 100:4*

From the Pastor,

Okay, it is November so you can expect to hear from Our Saviour about our budget. You may have gotten your budget letter already. You may notice that we are not referring to this as a "Stewardship Drive" this year. We are calling this a "Budget Drive." When the Congregation Council wrote a Document that considered the Future of Our Saviour, one of the threads of that document was 'stewardship.' We used these definitions of Stewardship:

Christian Stewardship is grateful and responsible use of God's gifts in the light of God's purpose as revealed in Jesus Christ. Christian stewards, empowered by the Holy Spirit, commit themselves to conscious, purposeful decision.

Biblical Stewardship states that everything we have belongs to God; we are to manage it for His glory.

It is clear that these definitions have to do with more than money and budgets.

The Our Saviour budget this year reflects more aspects of the future for Our Saviour than just the change in the use of the word "stewardship." At our Congregational Meeting December 2012, it was apparent to many of us that we needed to make some changes. One response might have been to become more fearful and act to conserve what we already have. The Congregation Council has chosen to act with some faith that God is still calling us to new ministries at Our Saviour. This is clearly reflected in our budget for the coming year. While seeking to be conservative with the expenses that we have, we decided to add some new items to the budget that have not been there before and give some meaning to the ideas that have come forth from the Council and our meetings with members.

- 1) We added \$1,000 to the budget in the area of Education Ministry. It is our intention to involve every adult at Our Saviour in some kind of spiritual growth in the next year. This will take many different forms. It will need some money.
- 2) We added \$2,250 to the budget for the exploration of using Solar Energy to supply some of our electrical needs. We have begun this process—but we have some questions. The money we have set aside is to answer those questions.
- 3) We added \$350 to the budget so that we could prepare some materials for people who visit us. We have some ideas about what we might do.

Each of these budget items is only a beginning. They represent to us hope and faith in the future. In order for any of these ideas to take shape, they need some commitment. They need commitment of both time and money and they need faith that God is working through us and in us for the sake of the world.

As you pray about what you can give, we are asking that you ask God what good God has worked in you for the sake of the world. You, children of God, have always been generous.

Pastor Anita

THE MESSENGER

Published monthly by:
Our Saviour Lutheran Church
1640 Genesee Street
Utica, New York 13502
Phone: 315-732-0134
Email: oslc-utica@verizon.net
Circulation: 251
Editors: Patsy and Norman Glista
Contributors: Members of the Congregation.

REMINDER—please mark your calendars.
The deadline for the December 2013 issue of
The Messenger is November 15, 2013.
Be sure that your group's upcoming events are
included. All members of the congregation are wel-
come to submit information for the monthly Messenger.
Articles may be sent to the church office, dropped off in
the office or e-mailed to oslc-utica@verizon.net.

OUR SAVIOUR LUTHERAN CHURCH CONTACT LIST



Church Office	732-0134		
Pastor Anita Mohr	724-5426		
Email: pastor-oslc@verizon.net			
Church Office Secretary	Erika Fuller		
Organist/Music Director	Anthony Marris		
Council Members			
Cindy Andereck, Council Pres.	738-4363	Pam Donovan , Council V. Pres.	736-8042
Priscilla Dygert, Secretary.	794-8506	Paul Douglass, Treasurer.	733-9240
John Adasek.	735-3168	Bruno Aploks.	797-9032
Katherine David.	732-0611	Liz Douglass.	733-9240
David Dudajek.	736-8685	David Wilbur.	725-0835
Youth Group Member	Rotates		
Coffee Hour Coordinator	Marian Arntsen		
Altar Guild	Gerry Presser		

If you have a committee question, please speak to one of the Congregation Council members.

Our Community Outreach

Members of Our Saviour live among God's faithful people, serve all people, and strive for justice and peace in all the earth by sharing our building and supporting these programs:

Alcoholics Anonymous® a fellowship of men and women who share their experience, strength and hope with each other that they may solve their common problem and help others to recover from alcoholism holds regular meetings in our facility.

Seeds of Hope, a local food pantry is a collaborative effort of First Presbyterian—Utica, Our Saviour, New Hartford Presbyterian, and New Hartford United Methodist churches.

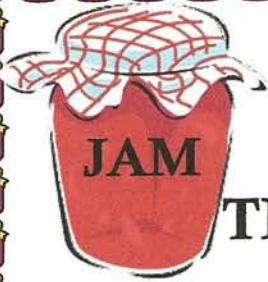
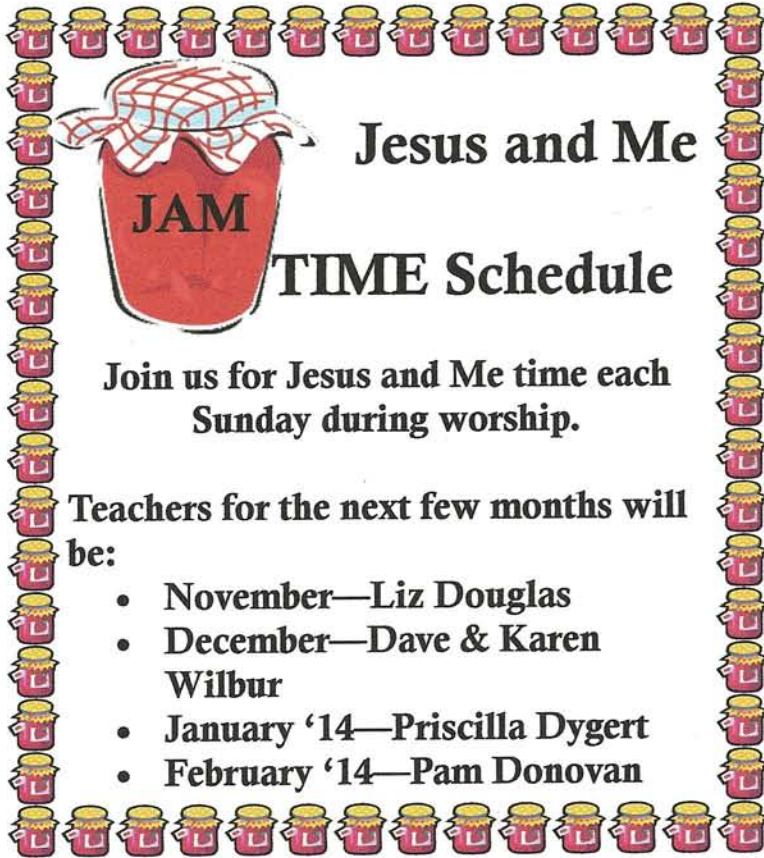
Hope House, a safe haven providing meals and other services in Utica is supported by volunteers from our congregation.

SPAN, a resource program for individual nurses who are affected by an alcohol or drug-related problem or related mental health problem meets weekly in our building.

HIV dinners which provide dinner and a place for people who are HIV positive to network and learn about the latest trends in treatment are held each month at our church.

Boy Scouts of America, has a chartered scouting program including a Cub Scout Pack. Paul Douglass serves as our congregation liaison to the scouting program.

Congregational Ministries



Jesus and Me

TIME Schedule

Join us for Jesus and Me time each Sunday during worship.

Teachers for the next few months will be:

- November—Liz Douglas
- December—Dave & Karen Wilbur
- January '14—Priscilla Dygert
- February '14—Pam Donovan

All Saints Day
Sunday, November 3
Give thanks for all
who have led us in faith.

Our Saviour Saints in the past year:

12/1/12	George Harrer
1/12/13	Kathryn Fink
1/15/13	Cheryl Rocco
1/17/13	Gaylord Brandes
4/13/13	William Horan
6/3/13	Helen Gilbert
10/13/13	Virginia Muntz

Christ the King Sunday
November 24, 2013



THANKSGIVING STUFFING PREPARATION



SAVE THE DATE!

Wednesday, November 27 @ 9:30am

Sharpen your knives, bring your cutting boards and mini-choppers, and join the fun! On November 27 many hands will be helping to prepare the stuffing for First Presbyterian's Community Thanksgiving meal. **Please sign-up in the Narthex if you plan to help.** If you have questions, please contact Judy Stanek (896-5032) or Betty Gallup (941-2566).

Thank you!



Thank you to everyone who helped with the October Fall Clean-Up day!

Seeds of Hope Food Pantry

Don't forget Seeds of Hope Food Pantry—bring canned goods and other non-perishable food items and leave them in the wheelbarrow in the Narthex.

In this time of Fall Harvest—let us remember to help our neighbors.

Congregational Ministries

Are You a Pumpkin?



A woman was asked by a co-worker, "What is it like to be a Christian?" The co-worker replied, "It is like being a pumpkin. God picks you from the patch, brings you in and washes all the dirt off of you. Then He cuts off the top and scoops out all the yucky stuff. He removes the seeds of doubt, hate, and greed. The He carves you a new smiling face and puts His light inside of you to shine for all the world to see."

Supporting God's work through our giving.

TREASURER'S REPORT

September 2013

	2012			THRU August	2013		
	BUDGET	ACTUAL	VARI		BUDGET	ACTUAL	VARI
INCOME	\$125,982	\$124,833	- 1%		\$ 64,514	\$ 75,409	17%
EXPENSES	\$125,982	\$107,681	-15%		\$117,990	\$110,015	- 7%
OUTSTANDING OBLIGATIONS	\$ 0	\$ 17,152			(\$ 53,476)	(\$ 34,607)	
	2012			September	2013		
	BUDGET	ACTUAL	VARI		BUDGET	ACTUAL	VARI
INCOME	\$15,748	\$10,707	-32%		\$ 8,064	\$ 9,780	21%
EXPENSES	\$15,748	\$10,377	-34%		\$14,749	\$ 7,090	-52%
OUTSTANDING OBLIGATIONS	0	\$ 330			(\$ 6,685)	\$ 2,691	
INVESTMENT INCOME		\$ 47,000					
TOTAL OUTSTANDING	0	\$ 17,482			(\$60,161)	(\$31,916)	

NOTES—Current month: Our income is 21% ABOVE estimate and our expenses are 52% below budget. We are \$2,691 in the black for the month of September.

Year to Date: Our income is 17.4% ABOVE estimate and our expenses are 11.8% below plan **We are currently \$31,916 in the RED.** We have currently not withdrawn any monies from our investments. This is compared to last year of \$47,000.

Information presented by Paul Douglass, Treasurer

In the larger Lutheran Community

The Lutheran Homes Foundation

Christmas is a very special time of the year and the Christmas spirit abounds at LutheranCare—with your help. We are respectfully requesting donations of unwrapped items that would surely brighten the season and bring the Christmas spirit to life for those we care for and care deeply about. This “wish list” includes:



- Personal care items such as unopened boxes of tissue, hand cream and hairbrushes
- Books both large print and audio
- Afghans, throws and comforters
- Large piece jigsaw puzzles
- Slippers, slipper socks, hats, gloves and mittens
- Artwork and tote bags for walkers
- Room decorations and wall hangings
- Button-down or zipper-front cardigans both male & female

Donations may be placed in the box in the Church Narthex no later than Sunday, December 1, 2013 and they will be delivered to LutheranCare or you may deliver items yourself to LutheranCare no later than Wednesday, November 27. Questions—call Judy Stanek at 896-5032 or Karen Ostinett, Director of Fund and Volunteer Development at LutheranCare, 235-7104.



Vanderkamp Center's 7th Annual Food Festival & Silent Auction

Cruise on in!
Join the fun!



Enjoy the fellowship of friends, fabulous food and entertainment, while you bid on items of your choice!

This fundraiser supports program needs and caomperships for Summer Camp 2014. Camper weeks were up this past summer! The need continues.

Friday, November 22 6:30-9:00pm
Good Shepherd Lutheran Church
Route 92, Fayetteville, NY
Tickets \$15/person

You can participate by:

- Making a donation to be auctioned
- Attending the event
- First table to be sold at 7pm

Donate or purchase a ticket by contacting:

Bev Carrigan 476-8800 Becki Harris 696-6566
Linda Graves 451-4944 Vanderkamp 675-3651

PILGRIMAGE INTO THE LAST THIRD OF LIFE

7 Gateways to Spiritual Growth

AN ONLINE E-RETREAT

7:00—7:30PM

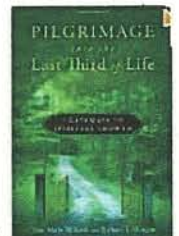
Wednesdays

- December 4: Facing Aging and Death
- December 11: Living with Limitations
- December 18: Doing Inner Work
- January 8: Living In and Out of Community
- January 15: Prayer and Contemplation
- January 22: Redeeming Loss and Suffering
- January 29: Leaving a Legacy

Using the book of the same name written by Jane Marie Thibault and Richard L. Morgan, published by Upper Room (2012), the Retreats will be facilitated by the Rev. Brian McCaffrey, Chaplain at LutheranCare.

TO REGISTER and for more information—www.nefosa.org or call Pr. Brian (235-7125)

Sponsored by The Northeast Forum on Spirituality and Aging and the Older Adult Ministries, Upper NY Conference, United Methodist Church.



In our community and the wider church

INTERFAITH PROJECT OF GREATER UTICA
PRESENTS

BREAKING BREAD



An Interfaith Thanksgiving Experience

Tuesday, November 26 at 7:00pm
R.C.I.L., 1607 Genesee Street, Utica

Featuring:

Area clergy and choirs

And

Guest speaker, S. Brent Plate

“The Worldwide Wonder of Bread”

Exploring the symbol of bread and
bread substitutes in various traditions.

Free Event, Light Refreshments



S. Brent
Plate is
visiting
associate
professor
of religious

studies at Hamilton College, and
cofounder and managing editor
of *Material Religion: The Journal
of Objects, Art and Belief*. Along
with several books, his writings
have been published in the
Washington Post, *Huffington
Post*, *The Chronicle of Higher Edu-
cation and Religion Dispatches*.
His newest book, *A History of
Religion in 5 1/2 Objects*, will be
released in March 2014.



Northeast Forum on Spirituality and Aging

*MEMORY CAFÉ'S: There's A Time and a
Place for Fun, Even with Alzheimer's*

JOIN US

Thursday, November 14, 2013

8:30—10:00am

Boardroom at LutheranCare

108 Utica Road, Clinton

Lori La Bey will join us by Skype. She brought the first Memory Café to the U.S. from the U.K. in 2011. The Memory Café is a social support group for people with early memory loss and their care partners. Lori is a passionate advocate who searches for ways to shift our dementia care culture from crisis to comfort. She was recognized by Sharecare and Dr. Oz as the #1 Influencer Online for Alzheimer's.

Celebrating our global church



Consider these facts about the ELCA's global engagement:

- The ELCA belongs to The Lutheran World Federation a global communion of more than 70 million Lutherans in 79 countries.
- Over 240 ELCA missionaries work hand in hand with our neighbors in 40+ countries.
- In the last 25 years, 800 International Leaders have received scholarships to complete their studies at colleges, universities and seminaries.
- There are more than 60 Young Adults in Global Mission serving in 9 countries this year.
- Every year the ELCA responds to requests from companion churches to help start new congregations, extend outreach in urban areas and train pastors and evangelists.

Learn more at www.ELCA.org/globalchurch.

In our community and the wider church

Helping Hands: Home Companion Service A New Service of LutheranCare

Quality Care Since 1979!!



Offering grocery shopping, light house-keeping, transportation, pet care, friendly visitor & respite assistance



- Fully Insured & bonded
- Consistent, reliable, well-trained
- Flexible scheduling
- Days, overnight & week-ends
- Simple in-home registration

LutheranCare
Helping Hands

315.235.7196



Hope House Executive Director, Tom Labayewski shares that there are a lot of numbers that can be used to talk about Hope House—they served 95,376 meals in 2011. In the same year they received almost \$250,000 in food and other donations thanks to the generosity of the community. Additionally volunteers donated time that saved more than \$130,000.

But it isn't just about numbers. Every day Hope House serves hot meals in a warm and safe environment and with a smile. They help with referrals to other services, listen when people need to talk, provide a hug when there are no words to be said. They cheer their guest successes and pray for them when they have a set back because in the end, what happens at Hope House is about people.

Our Saviour is one of the groups that helps at Hope House by volunteering to serve meals one night each month. Ask Jan Dudajek how you can get involved.

Grief and the Holidays

Helping Yourself and Others
through the Season

Presented by Hospice and Palliative Care

A time for remembering and honoring those who have died and sharing practical ideas and suggestions for finding meaning as we make our way through the holidays.

Sunday November 3, 2013

2:00—4:00 PM

New Hartford First United Methodist Church
105 Genesee Street, New Hartford
Call 735-6487 ext 271 to register.
Open to the public—No charge



**Thanksgiving
A time to thank God
for all his gifts!**



Worship Schedule
Worship is at 10:00am

2013

	November 10	November 17	November 24 Christ the King Sunday	December 1 1st Sunday in Advent
Greeters	Alex Dudajek and Mary Ellen Riemenschneider	Liz and Paul Douglass	Sheena Andereck and Pam Donovan	Sandy and Jim Lenahan
Acolytes	Noah Thrasher	Kenny Douglass and Michael Robles	Mariah Thrasher	Joey Abraham and Kenny Douglass
Worship Assistant Lector	N/A	Sheena Andereck Scott Donovan (L)	N / A	Barbara Godbey-Miller Mary Tollerton (L)
Nursery	Susan Morris	Judy Petroski	Katherine and Kathy David	Sue Arntsen
Coffee Hosts	Mary Ellen Riemenschneider and Sandy Lenahan	Judy and Myron Sierson	Jan Dudajek and Bev Smith	TBD



November 3 Coffee Hosts—Linda Roser and John Adasek

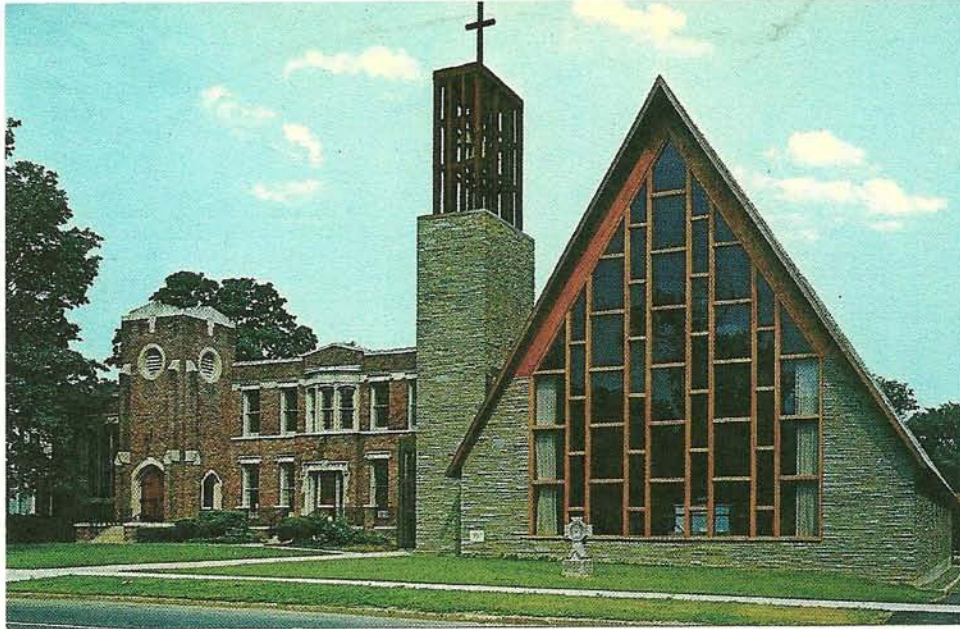
Ushers—Scott Donovan, Pam Donovan, Sally Townsend, Lou Lombard
Altar Guild—Andereck Family

Our Saviour Lutheran Church
1640 Genesee Street
Utica, New York 13502

THE MESSENGER

November 2013
Vol. 11, Issue 10

Rev. Anita Mohr, Pastor



JOIN US FOR WORSHIP

*Worship at 10:00am
Jesus and Me (JAM)
children's time during worship*

*As faithful believers of Our Saviour Lutheran Church
we profess the covenant God made with us in our Baptism:
to live among God's faithful people,
to hear the word of God and share in the Lord's supper,
to proclaim the good news of God in Christ through word and deed,
to serve all people, following the example of Jesus,
and to strive for justice and peace in all the earth.*